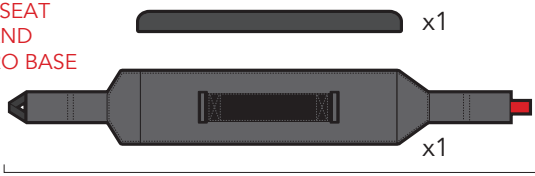


# REMIDEMI PASSENGER KIT INSTALLATION

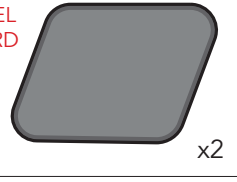
For Benno® RemiDemi with Jump Seat Rear Rack (Not Included)

## Hardware

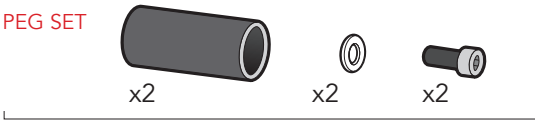
JUMP SEAT PAD AND VELCRO BASE



WHEEL GUARD SET



FOOT PEG SET



**IMPORTANT: THE SMALL RED TAB HAS TO BE IN THE FRONT OF THE RACK.**

**READ CAREFULLY BEFORE INSTALLATION AND USAGE. INSTALL AND USE ONLY AS A COMPLETE KIT. TO BE INSTALLED BY MECHANIC AT AUTHORIZED BENNO DEALER.**

**IMPORTANT: Notes to mechanic:** See Instructions. Install Benno RemiDemi Passenger Kit only on compatible Benno RemiDemi models in combination with Benno RemiDemi Jump Seat Rear Rack. Use only original hardware (included) and pre-drilled holes and fittings. Do not mount Passenger Kit to damaged bikes or racks. Do not modify any parts, racks or bikes, change position or drill new holes as this will void any warranties and/or claims for liability.

**Step 1:** Ensure RemiDemi Jump Seat Rear Rack (not included) is properly installed and tightened. (See *RemiDemi Jump Seat Rear Rack Installation Manual*).

**Step 2:** Install Velcro base (B) on Jump Seat Rear Rack as shown on illustrations (B1-B4). **IMPORTANT: SMALL RED TAB HAS TO BE IN THE FRONT OF THE RACK.** Pull tabs as tight as possible while closing the Velcro for a firm and secure fit to prevent the Velcro base and Jump Seat Pad from sliding.

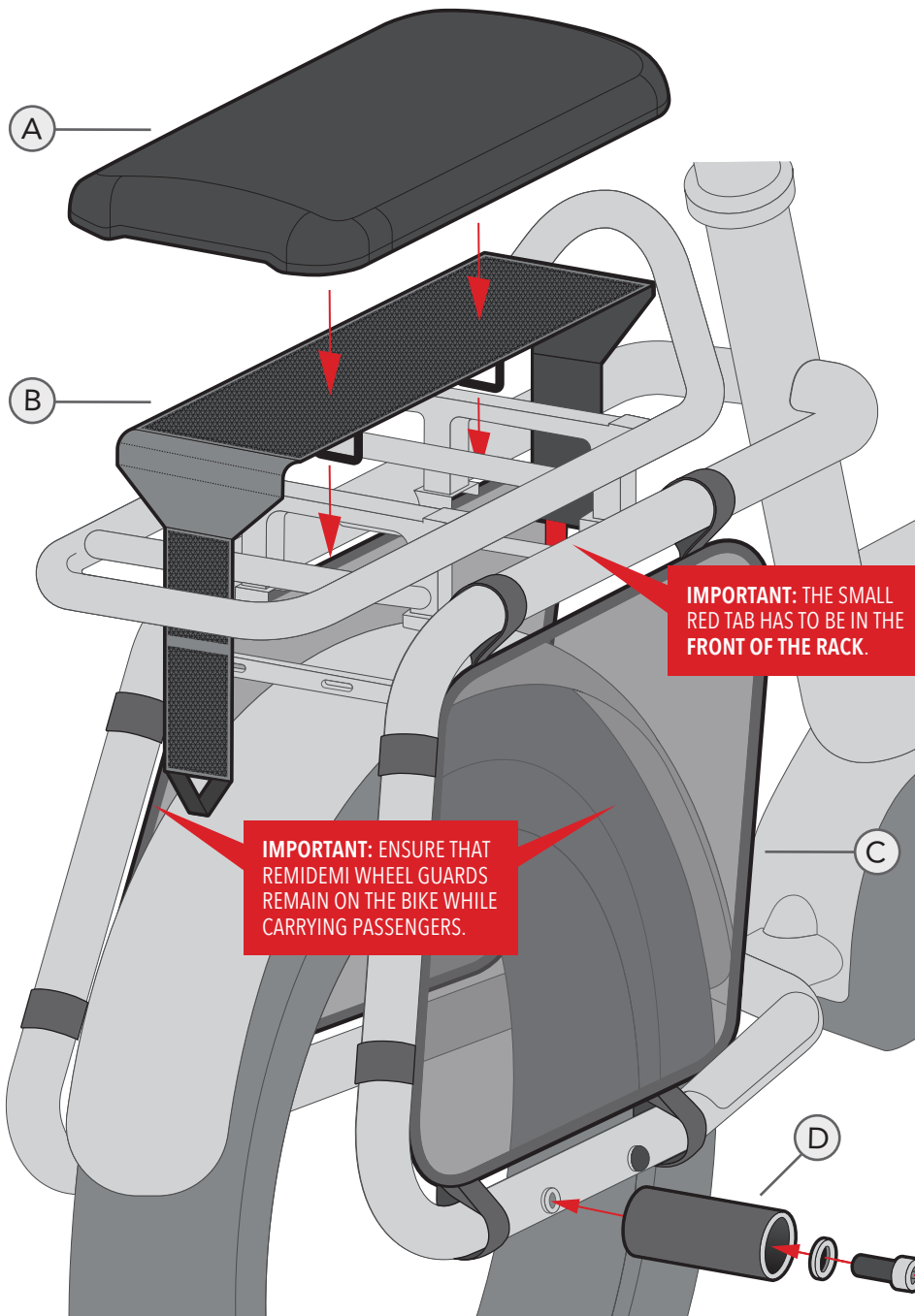
**Step 3:** Line up Jump Seat Pad (A) with Velcro base (B) and push the pad firmly down onto the center of the Velcro base.

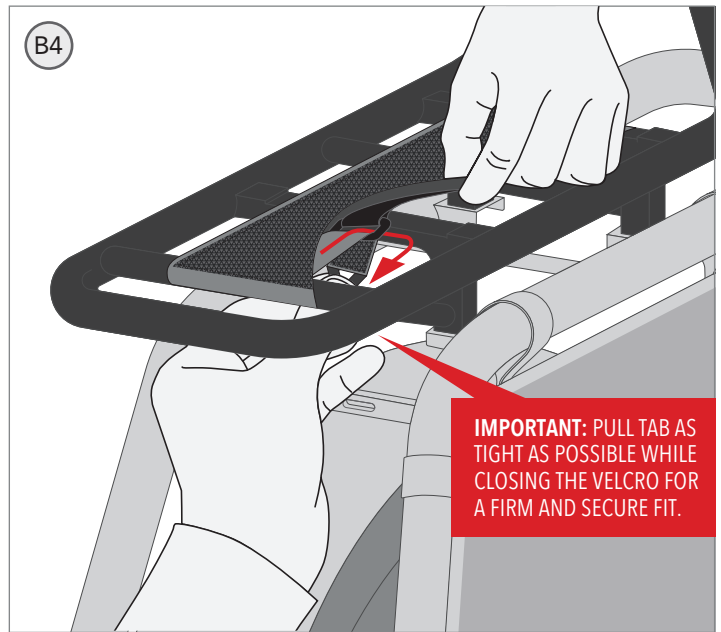
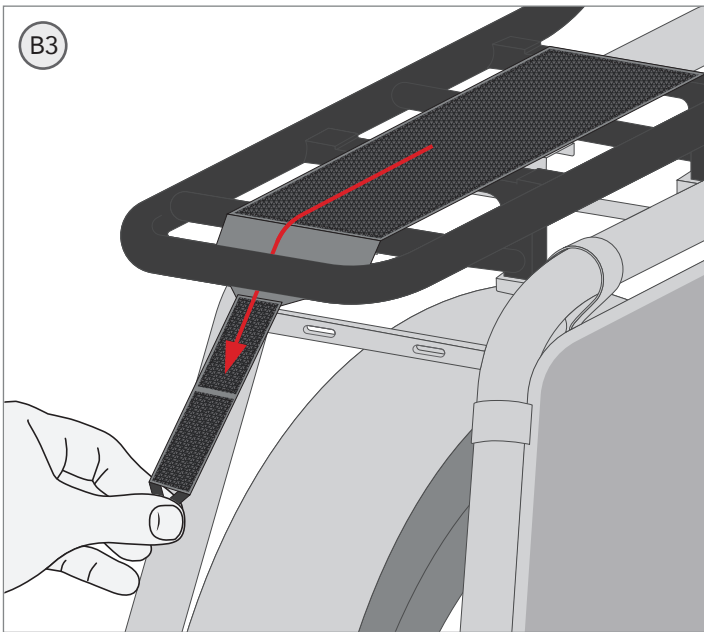
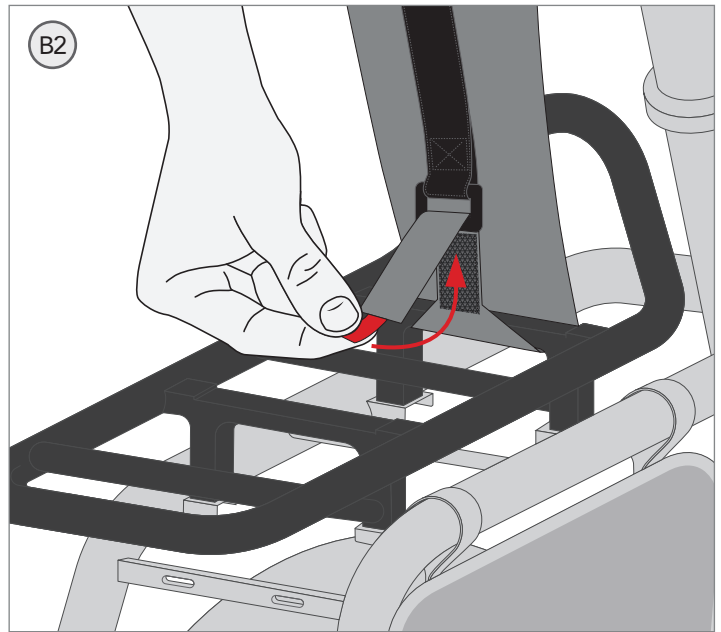
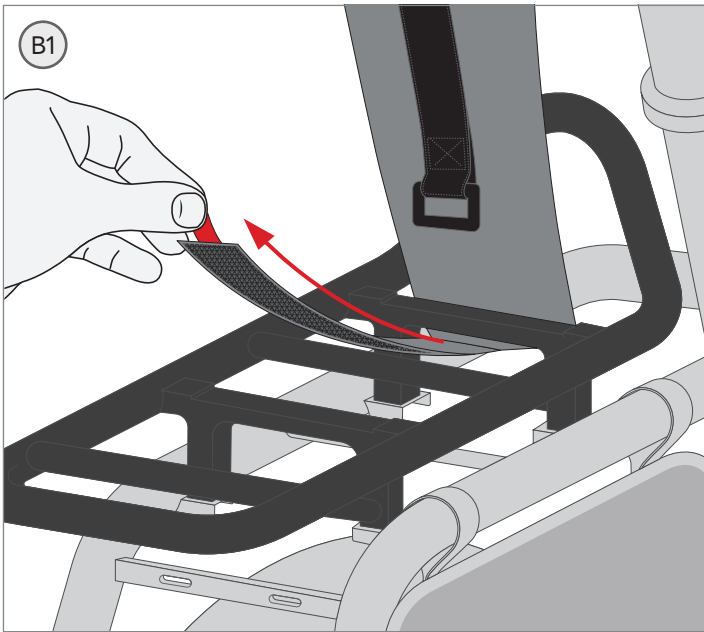
**Step 4: IMPORTANT: INSTALL REMIDEMI WHEEL GUARDS (C) ON BOTH SIDES TO COVER THE REAR WHEEL. FAILURE TO DO SO COULD RESULT IN SERIOUS INJURY!** Ensure all Velcro straps are tightened as shown.

**Step 5:** Remove rear rubber plug on the lower tube of the bike frame and install right Foot Peg (D) into the rear location as shown. Then install left Foot Peg following the same steps.

After installation, take a short test ride in order to check for secure fit and ensure that everything works correctly.

*Notes to owner:* Periodically check to make sure all bolts and Velcro straps remain tight as usage and vibrations may loosen them. **ENSURE THAT BENNO REMIDEMI WHEEL GUARDS REMAIN ON THE BIKE WHILE CARRYING PASSENGERS.**





**WARNING!** **REAR WHEEL MUST BE COVERED!**  
**INSTALL REMIDEMI WHEEL GUARDS, SEAT PAD AND FOOT PEGS BEFORE CARRYING PASSENGERS.**  
**FAILURE TO DO SO COULD RESULT IN SERIOUS INJURY!**



**WHEN CARRYING PASSENGERS, REAR WHEEL MUST BE COVERED! INSTALL BENNO REMIDEMI WHEEL GUARDS, SEAT PAD AND FOOT PEGS. FAILURE TO DO SO COULD RESULT IN SERIOUS INJURY!** MAKE SURE THAT NO PARTS OF THE BODY OR CLOTHING COME NEAR MOVING PARTS ON THE BICYCLE, SUCH AS CHAIN, SPOKES, TIRES OR BRAKES. INSTALL AND USE ONLY AS A COMPLETE KIT (WHEEL GUARDS, SEAT PAD AND FOOT PEGS) WITH JUMP SEAT REAR RACK (NOT INCLUDED). PASSENGERS MUST BE ABLE TO SECURELY HOLD THEMSELVES ON THE BIKE. DO NOT EXCEED TOTAL MAX GROSS WEIGHT OF THE BIKE AND/OR RACK MAX LOAD.