

# REMIDEMI PASSENGER KIT INSTALLATION

For Benno® RemiDemi with Jump Seat Rear Rack (Not Included)

**WITH POLY WHEEL GUARDS**

## Hardware

JUMP SEAT  
PAD AND  
VELCRO BASE

x1

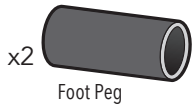


x1

**IMPORTANT:** THE SMALL  
RED TAB HAS TO BE IN THE  
FRONT OF THE RACK.

## FOOT PEG SET

## WHEEL GUARD SET



x2

Foot Peg



x4  
Spacer



x4  
Washer



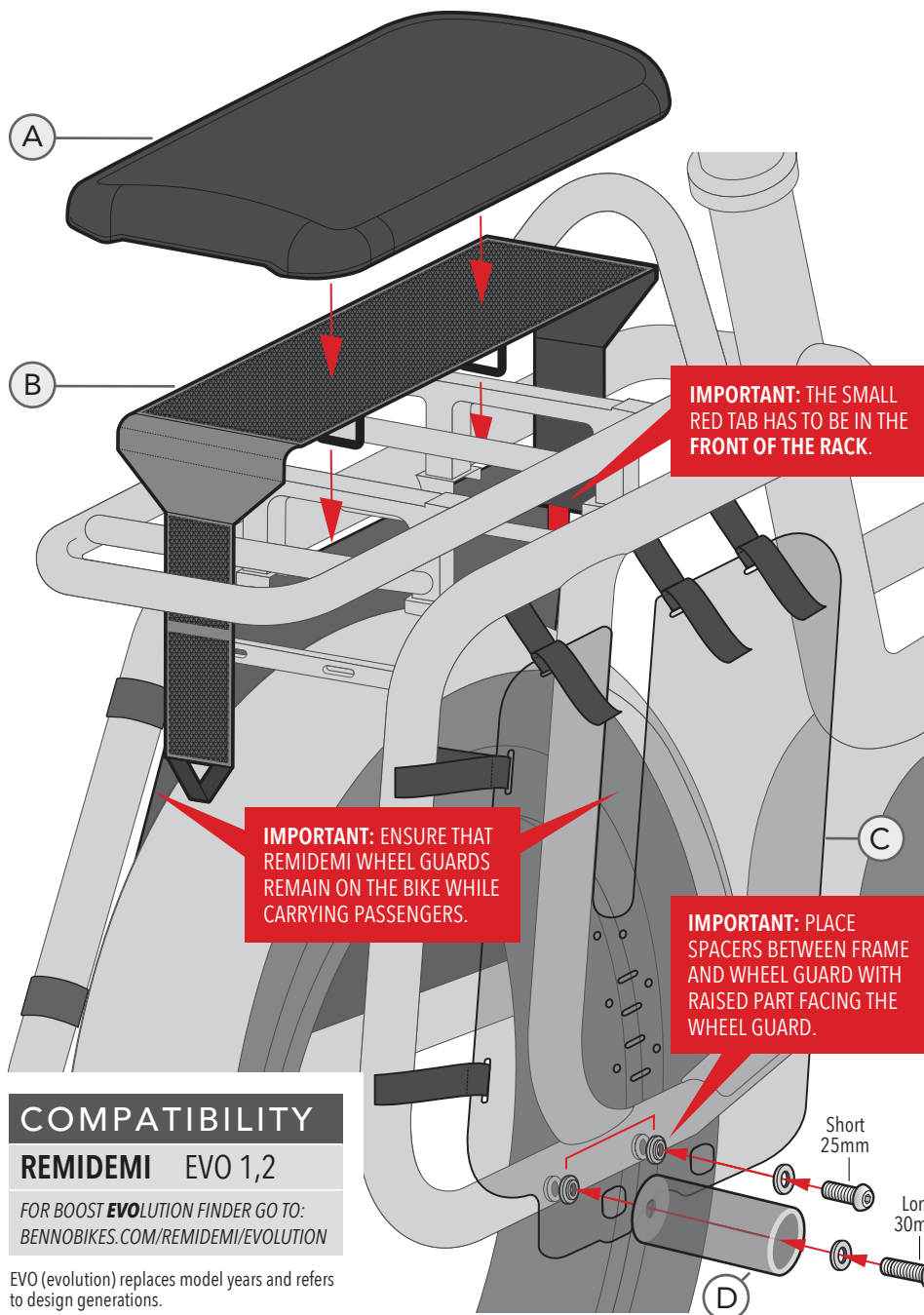
x2  
Bolt  
Long 30mm



x2  
Bolt  
Short 25mm



x2  
Wheel  
Guard



**READ CAREFULLY BEFORE INSTALLATION AND USAGE. INSTALL AND USE ONLY AS A COMPLETE KIT. TO BE INSTALLED BY MECHANIC AT AUTHORIZED BENNO DEALER.**

**IMPORTANT:** *Notes to mechanic:* See Instructions. Install Benno RemiDemi Passenger Kit only on compatible Benno RemiDemi models in combination with Benno RemiDemi Jump Seat Rear Rack. Use only original hardware (included) and pre-drilled holes and fittings. Do not mount Passenger Kit to damaged bikes or racks. Do not modify any parts, racks or bikes, change position or drill new holes as this will void any warranties and/or claims for liability.

**Step 1:** Ensure RemiDemi Jump Seat Rear Rack (not included) is properly installed and tightened. (See *RemiDemi Jump Seat Rear Rack Installation Manual*).

**Step 2: IMPORTANT: INSTALL REMIDEMI WHEEL GUARDS (C) ON BOTH SIDES TO COVER THE REAR WHEEL. FAILURE TO DO SO COULD RESULT IN SERIOUS INJURY!**

Remove the two rubber plugs on the lower tube (chain stay) of the bike frame. Follow instructions as seen on illustrations 1-4. Place both spacers between frame and wheel guard with the raised part facing the wheel guard. Insert short bolt (25mm) in front through washer, wheel guard and spacer into frame as shown in 1 and hand tighten. Then insert long bolt (30mm) in rear through washer, foot peg (D), wheel guard and spacer into frame as shown in 2 and tighten **both** bolts securely to maximum 12Nm. Now fasten all Velcro straps firmly around the frame as shown in 3. Now repeat same steps to install left/other side (not shown).

**Step 3:** Install Velcro base (B) on Jump Seat Rear Rack as shown on illustrations (5-8).

**IMPORTANT: SMALL RED TAB HAS TO BE IN THE FRONT OF THE RACK.** Pull tabs as tight as possible while closing the Velcro for a firm and secure fit to prevent the Velcro base and Jump Seat Pad from sliding.

**Step 4:** Line up Jump Seat Pad (A) with Velcro base (B) and push the pad firmly down onto the center of the Velcro base.

After installation, take a short test ride in order to check for secure fit and ensure that everything works correctly.

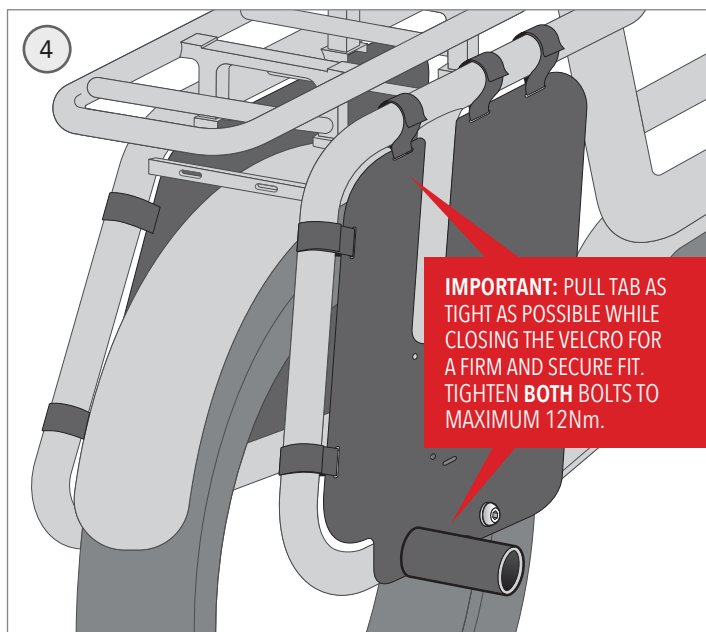
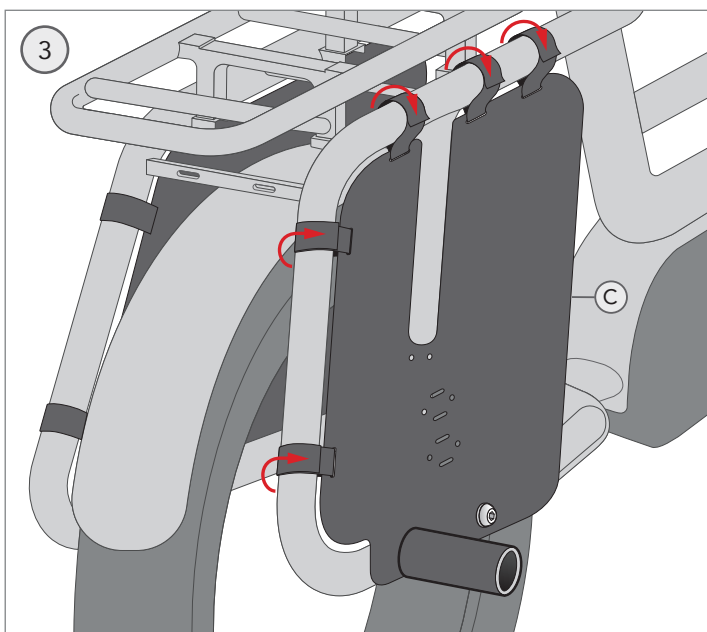
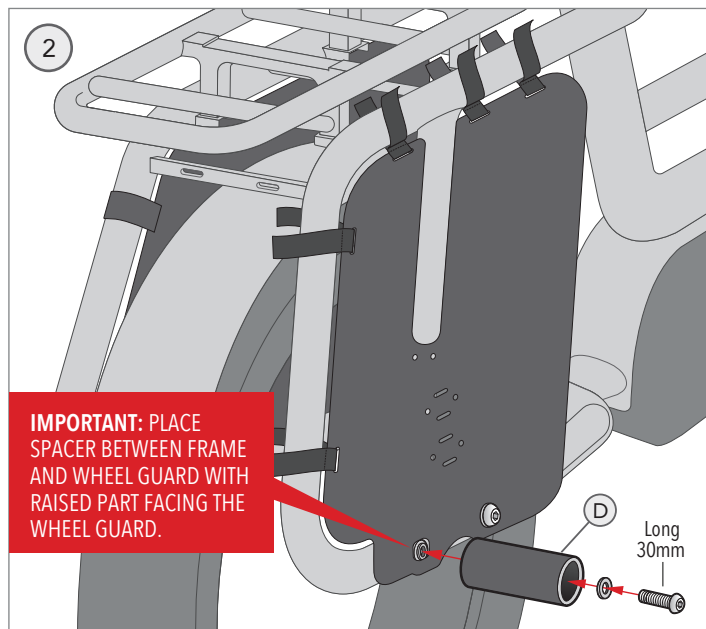
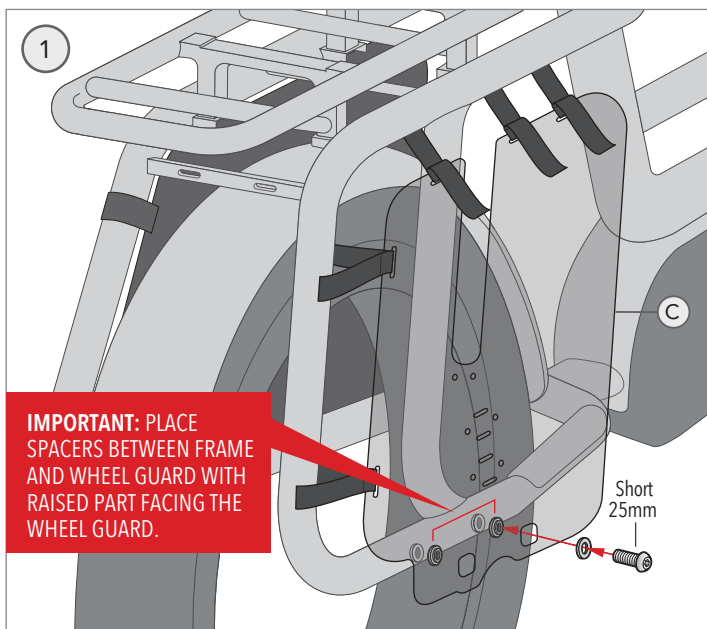
*Notes to owner:* Periodically check to make sure all bolts and Velcro straps remain tight as usage and vibrations may loosen them. **ENSURE THAT BENNO REMIDEMI WHEEL GUARDS REMAIN ON THE BIKE WHILE CARRYING PASSENGERS.**

## COMPATIBILITY

**REMIDEMI EVO 1,2**

FOR BOOST **EVOLUTION** FINDER GO TO:  
[BENNOBIKES.COM/REMIDEMI/EVOLUTION](http://BENNOBIKES.COM/REMIDEMI/EVOLUTION)

EVO (evolution) replaces model years and refers to design generations.



**WARNING!**

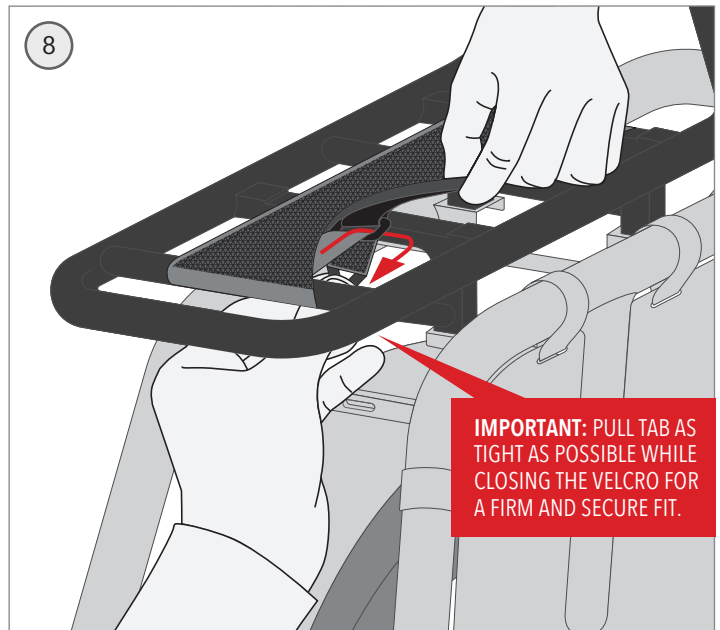
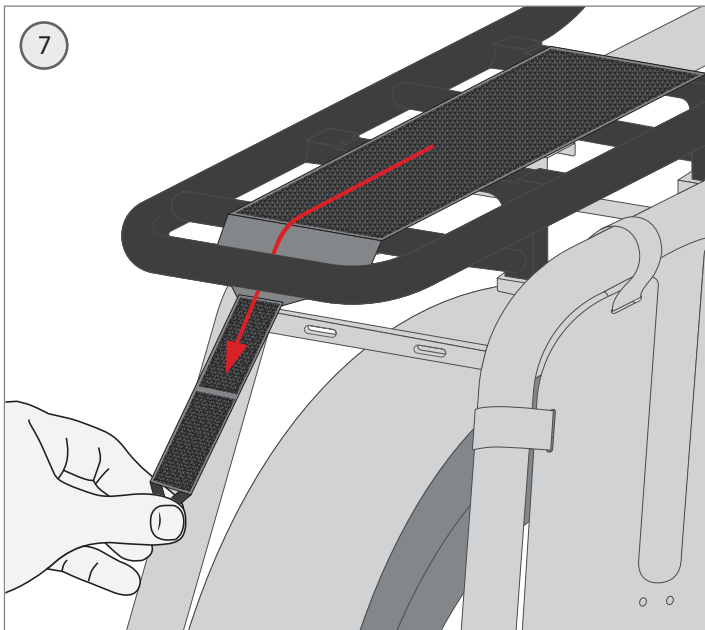
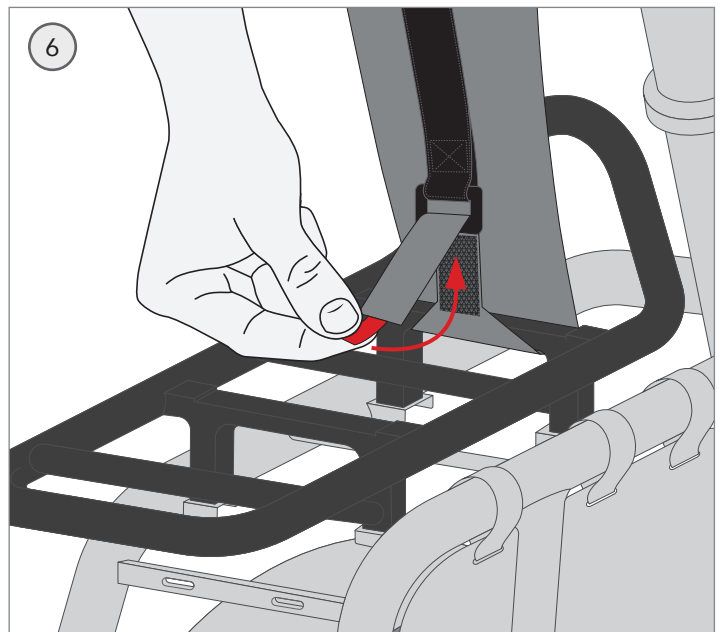
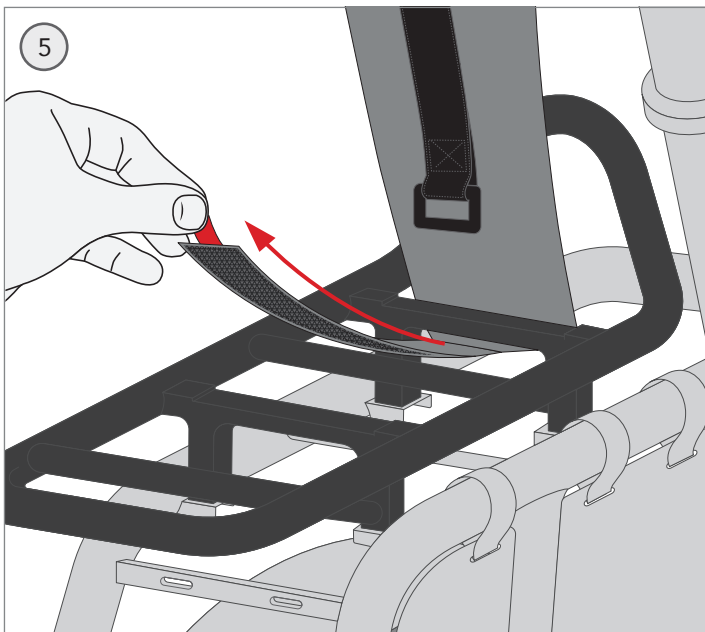
## REAR WHEEL MUST BE COVERED!

**INSTALL REMIDEMI WHEEL GUARDS, SEAT PAD AND FOOT PEGS *BEFORE* CARRYING PASSENGERS.**

**FAILURE TO DO SO COULD RESULT IN SERIOUS INJURY!**



**WHEN CARRYING PASSENGERS, REAR WHEEL MUST BE COVERED! INSTALL BENNO REMIDEMI WHEEL GUARDS, SEAT PAD AND FOOT PEGS. FAILURE TO DO SO COULD RESULT IN SERIOUS INJURY!** MAKE SURE THAT NO PARTS OF THE BODY OR CLOTHING COME NEAR MOVING PARTS ON THE BICYCLE, SUCH AS CHAIN, SPOKES, TIRES OR BRAKES. INSTALL AND USE ONLY AS A COMPLETE KIT (WHEEL GUARDS, SEAT PAD AND FOOT PEGS) WITH JUMP SEAT REAR RACK (NOT INCLUDED). PASSENGERS MUST BE ABLE TO SECURELY HOLD THEMSELVES ON THE BIKE. DO NOT EXCEED TOTAL MAX GROSS WEIGHT OF THE BIKE AND/OR RACK MAX LOAD.



**WARNING!**

## REAR WHEEL MUST BE COVERED!

**INSTALL REMIDEMI WHEEL GUARDS, SEAT PAD AND FOOT PEGS *BEFORE* CARRYING PASSENGERS.**

**FAILURE TO DO SO COULD RESULT IN SERIOUS INJURY!**



**WHEN CARRYING PASSENGERS, REAR WHEEL MUST BE COVERED! INSTALL BENNO REMIDEMI WHEEL GUARDS, SEAT PAD AND FOOT PEGS. FAILURE TO DO SO COULD RESULT IN SERIOUS INJURY!** MAKE SURE THAT NO PARTS OF THE BODY OR CLOTHING COME NEAR MOVING PARTS ON THE BICYCLE, SUCH AS CHAIN, SPOKES, TIRES OR BRAKES. INSTALL AND USE ONLY AS A COMPLETE KIT (WHEEL GUARDS, SEAT PAD AND FOOT PEGS) WITH JUMP SEAT REAR RACK (NOT INCLUDED). PASSENGERS MUST BE ABLE TO SECURELY HOLD THEMSELVES ON THE BIKE. DO NOT EXCEED TOTAL MAX GROSS WEIGHT OF THE BIKE AND/OR RACK MAX LOAD.